

## 2J5415P-433

433 MHz Adhesive Mount

### Key Features

**433MHz ISM**

- 433-435 MHz

Adhesive Mount

High Gain

Ground Plane Independent

Dimensions 60 × 112.5 × 11.3 mm

Customizable Cable and Connector



## 1. Antenna and electrical specifications

Parameters	433 MHz ISM Antenna
<b>Standards</b>	ISM, LoRa
<b>Band (MHz)</b>	433 MHz
<b>Frequency (MHz)</b>	433-435
<b>Return Loss (dB)</b>	~-20.3
<b>VSWR</b>	~1.2:1
<b>Efficiency (%)</b>	~46.5
<b>Peak Gain (dBi)</b>	~2.4
<b>Average Gain (dB)</b>	~-3.3
<b>Impedance (Ohm)</b>	50
<b>Polarisation</b>	Linear
<b>Radiation Pattern</b>	Omni-Directional
<b>Max. Input Power (W)</b>	50
<b>Connector Type</b>	SMA-Male Standard (Other Connectors Available)
<b>Cable Length</b>	300 cm Standard (Any Cable Length Available)
<b>Cable Type</b>	RG174 Standard (Other Cables Available)

### Antenna Measurement Conditions:

Mounted on 30 x 30 cm Plastic Plate

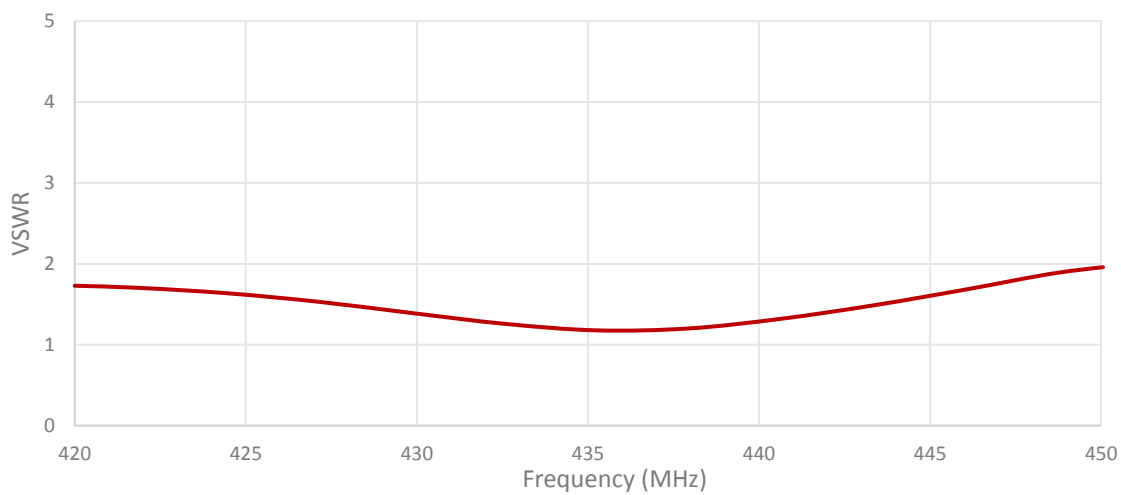
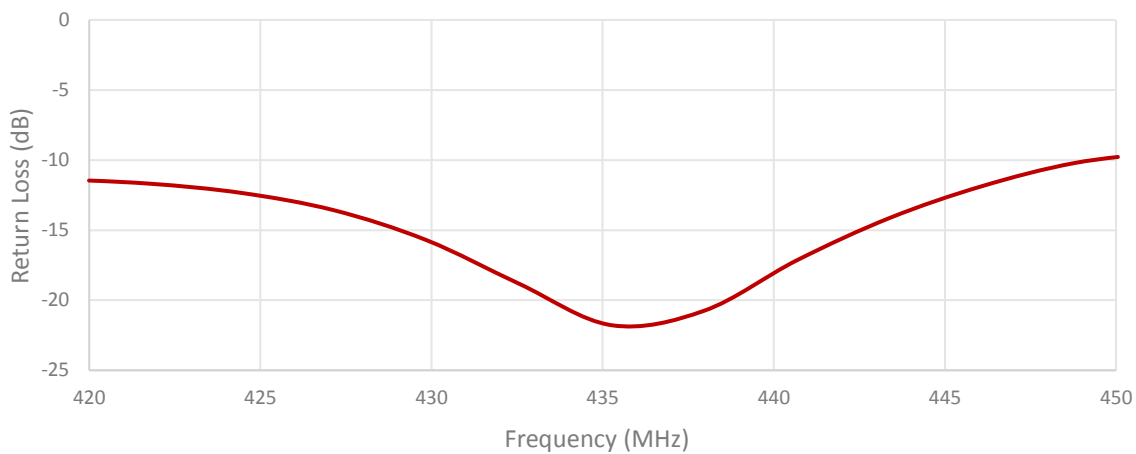
200cm of RG174 Cable

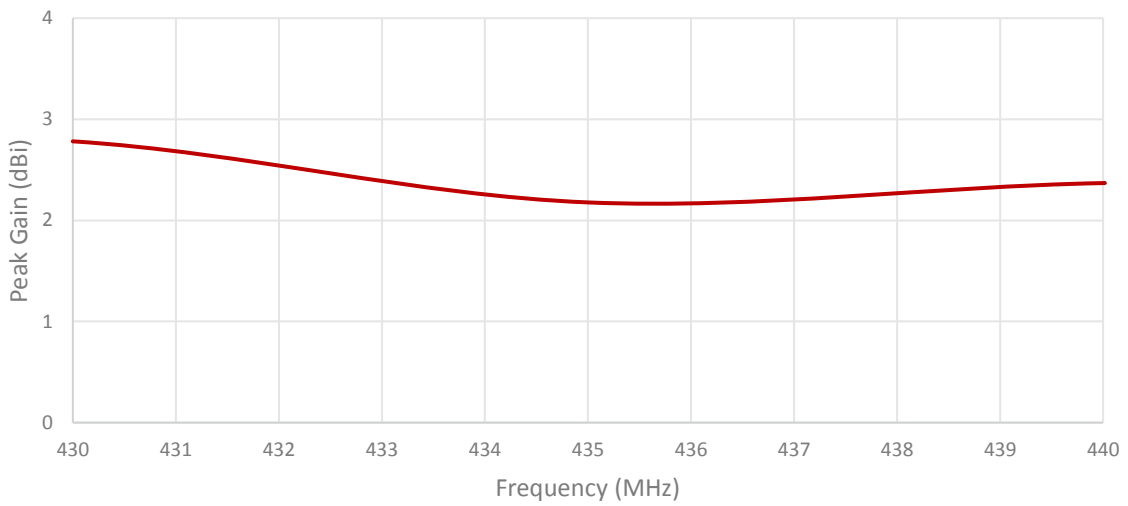
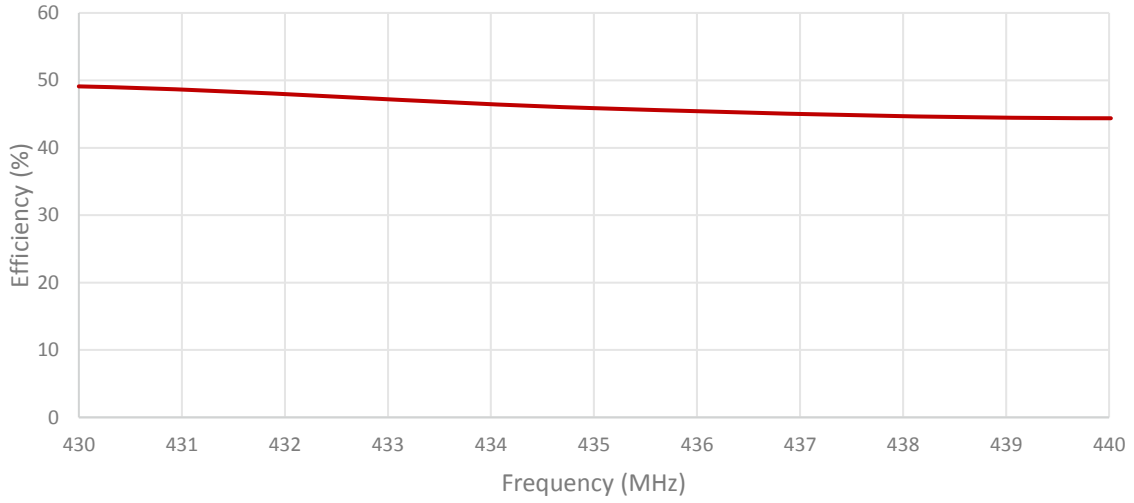
Measured in Certified CTIA 3D Anechoic Chamber

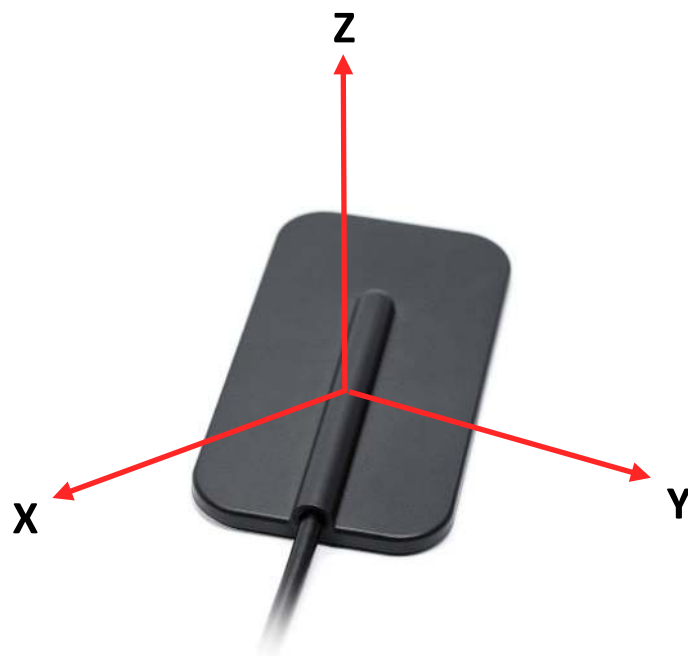
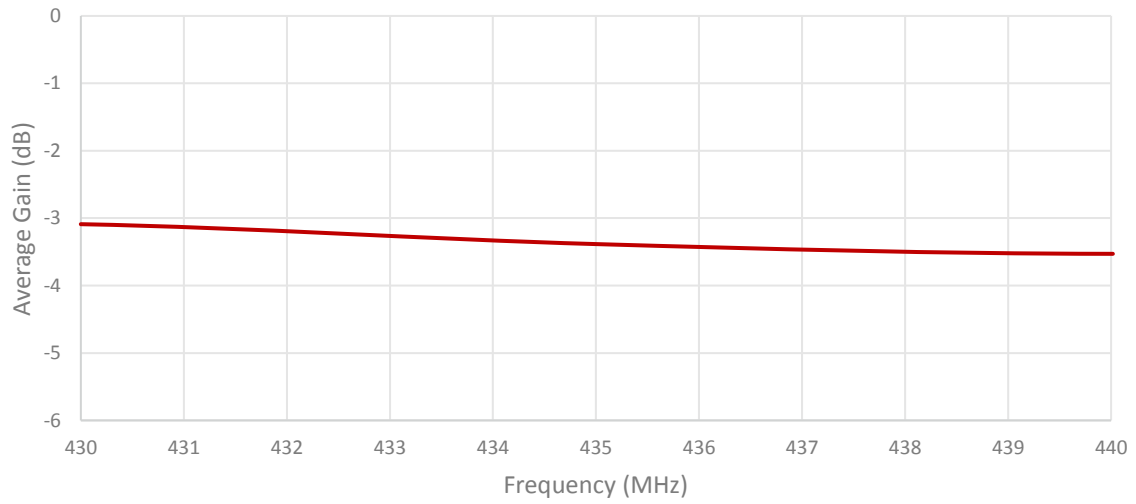
## 2. Mechanical and environmental specifications

Specifications	2J5415P-433
<b>Mounting Type</b>	Adhesive Mount
<b>Dimensions (mm)</b>	60 x 112.5 x 11.3
<b>Radome</b>	PC/ABS UV Stable
<b>Radome color</b>	Black, White
<b>Operating Temperature (C)</b>	-40 to +85
<b>Storage Temperature (C)</b>	-40 to +85
<b>Substance Compliance</b>	RoHS

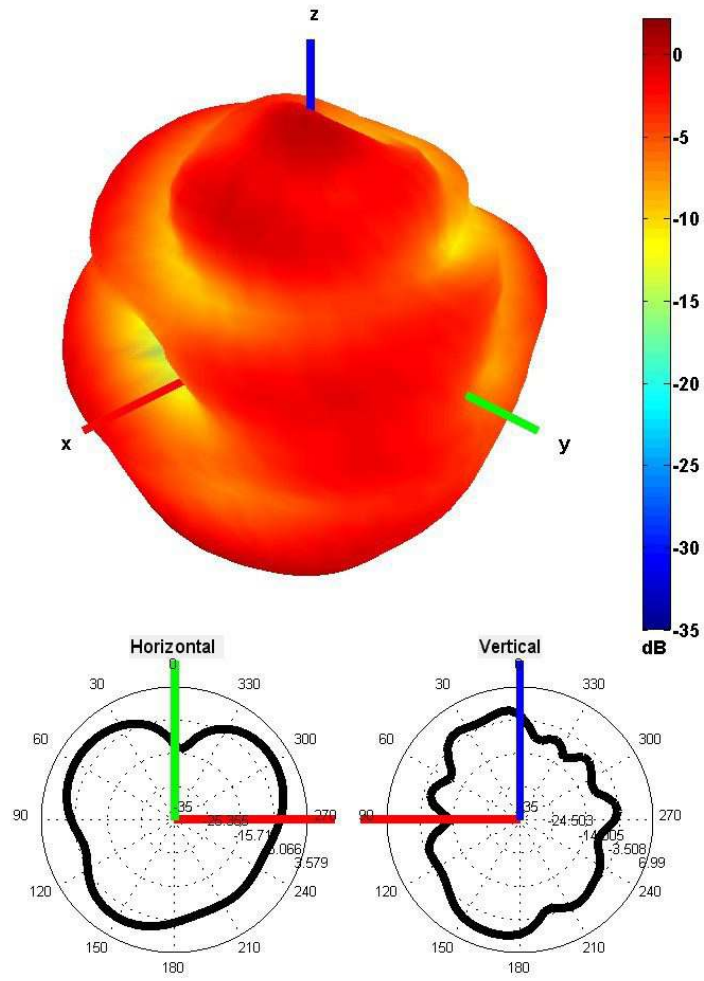
### 3. Antenna parameters





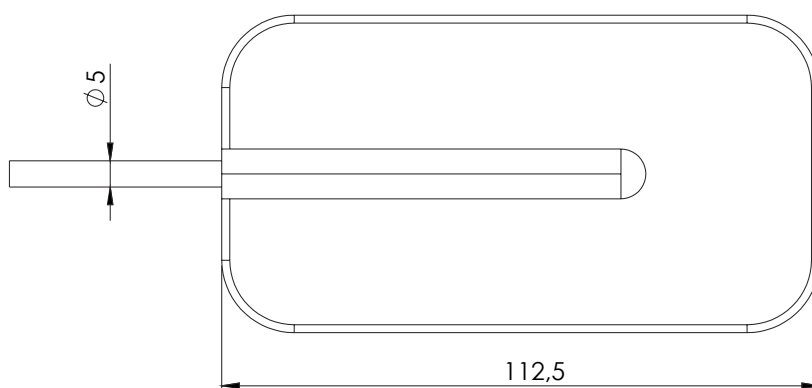
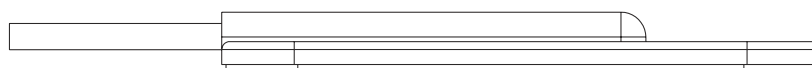
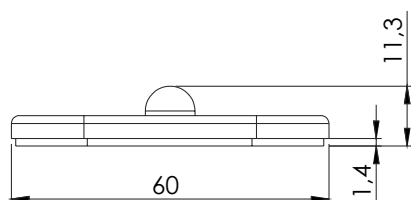


Radiation pattern reference



433 MHz Radiation pattern

## 4. Antenna drawings



## 5. Antenna Images

